



ENGINEERING DESIGN ASSOCIATES, INC.

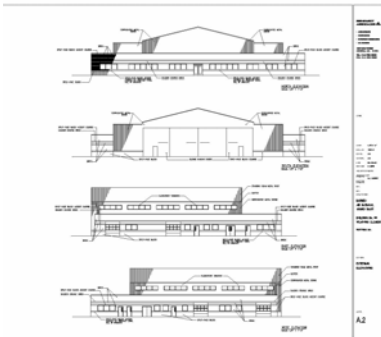
Structural & Civil Engineering





In today's economic arena, if you can't afford it, you can't build it. At EDA, Inc. we take your budget as seriously ...

Before the first line is drawn, we develop a structural systems strategy to avoid overruns, redesign, and value engineering.



while registered in Massachusetts, Connecticut, and Rhode Island...

... EDA has been providing structural and civil engineering services to both the private and public sectors.

Overview

EDA, Inc. is a full-service civil and structural engineering design firm located in Springfield, Massachusetts providing services to a variety of public and private clients throughout New England. Currently, the firm employs registered professional engineers, interns and technicians, and administrative personnel.

The firm was founded in 1984 and has distinguished itself over the years by inventive technical solutions and imaginative design. EDA, Inc. provides a full range of standard engineering services: including design, documentation, cost estimating, and construction phase services. Our work is focused in five target markets: educational, healthcare, retirement housing, industrial and commercial projects. EDA, Inc. is often characterized by providing more services and more building than the traditional firms of similar size.

At EDA, Inc., we believe that teamwork is the most effective means of ensuring a project's success. Our team listens carefully and then translates ideas into framing systems that really work. The design process involves a wide array of people with a diverse range of interests from the owner to the architect and the contractor to the end user. To accommodate these varied concerns, communication and cooperation are essential. At EDA, Inc., we promise open communication, mutual respect, and a passion to do our best. When we embark on a project, we are committed to building relationships and structures that endure.

Structural design is the cornerstone of our practice; indeed, it is the product around which all else revolves. For nearly two decades, we have worked with our clients to develop a variety of projects, many of which have been recognized for design excellence.

At EDA, Inc., we believe the strength of our design reflects the power of our client relationships. The bonds we establish lead to a cooperative effort of creative problem solving. The result is an approach and a system tailored to your needs. Today's technology allows us to generate a variety of design options and possibilities. We're producing solutions in conjunction with you, our clients; constantly improving the design to make it the very best it can be.

Project management is the most dynamic part of the engineering process. The part that moves and changes as we work through to the completion of the project. At EDA, Inc., we organize and manage the resources of each project to keep it on schedule and within budget. Initially, we take the time to clearly understand your expectations. Then, by anticipating your needs and staying ahead of potential conflicts, we're able to deliver what you want, when you want it.

Today, many projects are being built using alternative means. Schedule, budget, and risk management are important factors in the selection of an appropriate method. EDA, Inc. has the experience to help you select the right system. Whether you choose design/build, construction management, fast tracking, bid packages, or the traditional method, we have the expertise you need. Our depth of experience, combined with the advantages of today's technology, allows us to successfully monitor and meet the demands of all types of project delivery.

In today's economic arena, if you can't afford it, you can't build it. At EDA, Inc. we take your budget as seriously as you do, and we work hard to work within its restraint's. Before the first line is drawn, we develop a structural systems strategy to avoid overruns, redesign, and value engineering.

Engineering Design Associates, Inc.



*Indoor Sports Complex and Science Technologies Addition
Commerce High School Springfield, Massachusetts*



*New Facility for Luso Federal Credit Union
Ludlow, Massachusetts*



*New Police Headquarters
Rockport, Massachusetts*

Educational

J.F.K. Middle School Northampton, MA
Lenox Memorial High School Lenox, MA
Mohawk Regional High School Buckland, MA
Commerce High School Springfield, MA
Frontier Regional High School Deerfield, MA
Wolfswamp Elementary School Longmeadow, MA
Blueberry Hill Elemen. School Longmeadow, MA
Grafton Elementary School Grafton, MA
Drury High School North Adams, Massachusetts
Holy Cross School Springfield, Massachusetts
Mile Tree Elementary School Wilbraham, MA
Fitness & Health Center at Elm's College
Athletic & Recreational Facility at Fitchburg State
College
American International College (AIC):
AIC Health Science Building Springfield, MA
AIC Steeple Building Springfield, Massachusetts
AIC Dissecting Lab Springfield, Massachusetts
Hartland Elementary School East Hartland, CT
Jewish Community Center Springfield, MA
Loomis Chaffee School Windsor, Connecticut
Westfield Middle School Westfield, Massachusetts
Smith College Northampton, Massachusetts
Stony Hill Elementary School Wilbraham, MA

Commercial

Bank of Boston Great Barrington, Massachusetts
SIS Bank Addition Amherst, Massachusetts
Country Bank Wilbraham, Massachusetts
Shawmut Bank Greenfield, Massachusetts
Bank of New England Ware, Massachusetts
Fleet Bank Liberty Street Springfield, MA
Fleet Bank Palmer, Massachusetts
Fleet Bank East Longmeadow, Massachusetts
Fleet Bank Holyoke, Massachusetts
Anthony Associates Manchester, Connecticut
Greenfield Co-Operative Bank Greenfield, MA
LandTech Commercial Center Chicopee Falls, MA
Addition to Cooper's Corner Northampton, MA
Westwood Commons East Longmeadow, MA
Family Medical Center Springfield, Massachusetts
Forastaire Funeral Home East Longmeadow, MA
Words & Pictures Museum Northampton, MA
Monson Savings Bank Hampden, Massachusetts
Monson Savings Bank Wilbraham, Massachusetts
National Drive Office Building Glastonbury, CT
3500 Main Street Springfield, Massachusetts
Massachusetts Mutual Airwalk Springfield, MA
Elm Street Office Building West Springfield, MA
Buckingham Place Springfield, Massachusetts

Municipal

New Police Headquarters Rockport, MA
Public Safety Complex Sunderland, Massachusetts
Public Safety Complex Sturbridge, Massachusetts
Fire District Headquarters Montague, MA
Municipal & Public Safety Complex Berlin, MA
Town Hall Holland, Massachusetts
Police Dept. & Senior Center Belchertown, MA
Town Garage Longmeadow, Massachusetts
Town Garage Brimfield Massachusetts
Police Garage West Springfield, Massachusetts
Registry Building Enfield, Connecticut
West Stafford Fire Department West Stafford, CT
Fire Department Belchertown, Massachusetts
Joshua Hyde Library Sturbridge, Massachusetts
Bristol County Jail Rehab New Bedford, MA
State Office Building Springfield, Massachusetts
Palmer Fire Department Palmer, Massachusetts
U.S. Fish & Wildlife Service Hadley, Massachusetts
Town Garage Rocky Hill, Connecticut
Town Hall Renovations Munson, Massachusetts
Town Hall Renovations Easthampton, MA
Police Headquarters Hamilton, Massachusetts
Police Headquarters Warren, Massachusetts
Fire District Headquarters Shelburne Falls, MA



*Renovations to Building 1614 at Hanscom Air Force Base
Bedford, Massachusetts*



*Super Foodmart
Danbury, Connecticut*



*Athletic & Recreational Facility at Fitchburg State College
Fitchburg, Massachusetts*

Governmental

Barnes Air National Guard Base (BANG):

BANG Engine Shop

BANG Weapons & Load Crew Facility

BANG Exterior Façade Building 001

BANG Fuel Cell & Corrosion Control Hangars

BANG Fire Crash Rescue Station

BANG Flight Simulator Facility

Bradley Air National Guard Engine Shop

Windsor Locks, Connecticut

Westover Air Reserve Base (WARB):

WARB Marine Corps Reserve Training Center

WARB Branch Exchange Facility

Mountain Home Air Force Base (MHAFB):

MHAFB Branch Exchange Mountain Home, ID

U.S. Fish & Wildlife Service Center Hadley, MA

Hanscom Air Force Base (HAFB):

Design/Build Phase 1 Building 1614 Renovations

Design/Build Phase 2 Building 1614 Renovations

Granite Museum Halibut Point State Park

Rockport, Massachusetts

Mercantile

Balise Saturn Dealership Springfield, MA

Balise Saturn Dealership Hadley, Massachusetts

Christmas Tree Shops at Yankee Candle

Chandler's Tavern at Yankee Candle

Retail Expansion at Yankee Candle

Yankee Candle International Deerfield, MA

Speedway Shopping Center Westboro, MA

Waldbaums Food Mart Bristol, Connecticut

Waldbaums Food Mart West Hartford, CT

Waldbaums Food Mart Wilton, Connecticut

Waldbaums Food Mart Springfield, Massachusetts

Waldbaums Food Mart Meriden, Connecticut

Waldbaums Food Mart Branford, Connecticut

Super Food Mart Danbury, Connecticut

Big Bunny Supermarket Southbridge, MA

Zayre's Department Store Agawam, Massachusetts

Purity Supreme West Springfield, Massachusetts

Riverdale Shopping Center West Springfield, MA

Hyundai Dealership West Springfield, MA

F.L. Roberts Convenience Store Agawam, MA

Dave's Soda & Pet City Northampton, MA

Wilbraham Auto Sales, Inc., Wilbraham, MA

Mohawk Trails Market Greenfield, Massachusetts

Crystal Springs Shopping Ctr. Belchertown, MA

Athletic & Recreational

Fitness & Health Center at Elm's College

Chicopee, Massachusetts

Athletic & Recreational Facility at Fitchburg State

College Fitchburg, Massachusetts

J.F.K. Middle School Gymnasium

Northampton, Massachusetts

Lenox Memorial H.S. Gymnasium Lenox, MA

Mohawk Regional H.S. Gymnasium Buckland, MA

Commerce High School Sports Complex

Springfield, Massachusetts

Frontier Regional H.S. Gymnasium Deerfield, MA

Boys & Girls Club at the Ludlow Community Ctr.

Ludlow, Massachusetts

Grafton Elem. School Gymnasium Grafton, MA

Spear Youth & Family Center at the

Scatic Valley YMCA Wilbraham, Massachusetts

Wolfswamp Elem. School Gym Longmeadow, MA

Blueberry Elem. School Gym Longmeadow, MA

Engineering Design Associates, Inc.



*Mason-Wright Retirement Community
Springfield, Massachusetts*



*Amherst Cinema—Phase 1 and 2
Amherst, Massachusetts*



*Addition and Renovations to Drury High School
North Adams, Massachusetts*

Residential

Highland House Springfield, Massachusetts
Woodrow Wilson School Conversion
Middletown, Connecticut
Orchardview Apartments Easthampton, MA
Sarum Village Salisbury, Connecticut
McIntosh Building Conversion Springfield, MA
Sumner Place Condominiums Springfield, MA
Housing for the Homeless Springfield, MA
Melville Housing Complex Newport, RI
Emanuel Senior Housing Worcester, MA
Symphony Apartments Springfield, Massachusetts
Lansdowne Place Condominiums Westfield, MA
Congregate Housing Simsbury, Connecticut
Congregate Housing Vernon, Connecticut
Congregate Housing Orange, Connecticut
Cummington Farms Cummington, Massachusetts
Glenmeadow Condominiums Longmeadow, MA
Brownstone Gardens III East Longmeadow, MA
The Inn at the Lathrop Easthampton, MA
Kenwyn Apartments Springfield, Massachusetts
Mason-Wright Retirement Comm. Springfield, MA
Quadrangle Court Springfield, Massachusetts
Carr Hall At Bay Path College Longmeadow, MA

Historical And Preservation

Colle Opera House Turners Falls, Massachusetts
Joshua Hyde Public Library Sturbridge, MA
Colonial Block Springfield, Massachusetts
Cook's Block Amherst, Massachusetts
Cummington Farms Cummington, Massachusetts
McIntosh Building Springfield, Massachusetts
Springfield City Hall Springfield, Massachusetts
Springfield Symphony Hall Springfield, MA
Valley Paper Rehabilitation Holyoke, MA
State Office Building Springfield, Massachusetts
Memorial Hall Monson, Massachusetts
Town Hall Easthampton, Massachusetts
The Evergreens Amherst, Massachusetts
Jefferson Park Apartments Springfield, MA
3640 Medical & Conference Ctr. Springfield, MA
3550 Main Street Springfield, Massachusetts
Amherst Cinema Phases 1 & 2 Amherst, MA
Amity Street Condominiums Amherst, MA
S.A.F.E. Elementary School Springfield, MA
President's House at BayPath College
Elihu Thompson Municipal Bldg. Swampscott, MA

Investigations & Analysis

Structural Analysis - Re-Roofing Projects:
North Fire Station Amherst, MA
Amherst Elementary School Amherst, MA
Mary Lynch Elementary School Springfield, MA
Homer Street Elementary School Springfield, MA
Barry Elementary School Chicopee, Massachusetts
Frontier Regional High School Florence, MA
Mary Lyons Dormitory At UMass Amherst, MA
Wolfswamp Elementary School Longmeadow, MA
Blueberry Hill Elementary School Longmeadow, MA
Drury High School North Adams, Massachusetts
Franklin County Technical School Turners Falls, MA
J.F.K. Middle School Northampton, Massachusetts

Structural Analysis - Floor and Roof Loading:
Springfield Technology Park Springfield, MA
Springfield Library & Museums Springfield, MA
Springfield Tech. Comm. College Springfield, MA

Feasibility Studies
Student Union Food Court at UMass Amherst, MA
Roger L. Putnam Vocational H.S. Springfield, MA



*Wesley United Methodist Church
Amherst, Massachusetts*



*Simpson Manufacturing Co., Inc. (StrongTie)
Enfield, Connecticut*



*GOODWIN COLLEGE RIVER CAMPUS
Master Plan - DDD1 Zone, Phases I - IV
RIVERSIDE DRIVE EAST HARTFORD, CONNECTICUT*

*Goodwin College River Campus
East Hartford, Connecticut*

Religious

Wesley United Methodist Church Amherst, MA
 Christian Education Expansion
 Bethany Assembly of God Agawam, MA
 Evangelical Covenant Church Springfield, MA
 Accessibility Modifications to South
 Congregational Church Amherst, Massachusetts
 Adaptive Reuse, Improvements & Renovations
 Church of the New Covenant Chicopee, MA
 Additions & Renovations to the Friars Residence
 St. Anthony of Padua Chicopee, Massachusetts
 Classroom Addition for the Pioneer Valley
 Christian School Springfield, Massachusetts
 Structural Review & Design for the United
 Congregational Church Holyoke, Massachusetts
 Additions & Renovations to the Sinai Temple
 Springfield, Massachusetts
 Renovations for the Greater New Life Christian
 Center Springfield, Massachusetts
 Holy Cross School Springfield, Massachusetts

Industrial

Tubed Products Easthampton, Massachusetts
 Kanzaki Specialty Paper Ware, Massachusetts
 Hampden Papers Holyoke, Massachusetts
 Tubed Products Easthampton, Massachusetts
 ESPN Service Facility Bristol, Connecticut
 Acorn Fasteners Bristol, Connecticut
 Presto Hartford Warehouse Bristol, Connecticut
 Frank's Distributing Springfield, Massachusetts
 J.A. Wright Company Northampton, MA
 Carando Food Products Agawam, Massachusetts
 Valley Paper Rehabilitation Holyoke, MA
 Harvey Industries Springfield, Massachusetts
 Plastic Packaging Corp. West Springfield, MA
 Commercial Distributing West Springfield, MA
 Johnson Packing East Longmeadow, MA
 Texcel Inc. East Longmeadow, Massachusetts
 American Honda Motor Co. Windsor Locks, CT
 Tambrands Machine Shop Palmer, Massachusetts
 Thorndike Mills Addition Palmer, Massachusetts
 Walbro Automotive Manufacturing Meriden, CT
 Walbro Automotive Addition Meriden, Connecticut
 Fisher Scientific Co. Inc. Addition Agawam, MA
 Magnani & McCormick, Inc. Enfield, Connecticut
 Simpson Manufacturing Co., Inc. Enfield, CT

Independent Peer Reviews

St. Leo's Parish School Expansion Leominster, MA
 Russell Elementary School Russell, Massachusetts
 Blandford Elementary School Blandford, MA
 Eric Carle Museum of Book Art Amherst, MA
 Amelia Park Ice Arena Westfield, Massachusetts
 Gateway Regional Middle/High Schools
 Jaworek Elementary School Marlborough, MA
 Morris School Lee/ Lenox, Massachusetts
 Goodwin College River Campus, East Hartford, CT
 Bright Meadow Parking Structure Enfield, CT

FEATURED PROJECT

Commerce High School
Indoor Sports Complex and
Science Technology Addition

In addition to the design of structural systems for new projects, EDA Inc. employs a logical approach to the system analysis required in the investigation, evaluation and design for renovations as well as the retrofitting of existing buildings.



Project

The three story indoor sports complex addition, approximately 57,000 sq. ft., is to house a swimming pool, elevated gymnasium, and classrooms. The renovations to the 219,000 sq. ft. existing school will include a new floor structure in the gymnasium, new classrooms, upgrade of the mechanical systems, and new rooftop HVAC equipment.

Problem

In order to allow occupancy of the existing High School until the end of the 1996-97 academic school year, the project comprised two major construction phases. First, a new sports complex and associated science technologies classroom addition. The complexity of the framing was due impart to the floor plan and further exasperated by poor soil conditions. The existing High School of Commerce would, at the end of the school year, be completely upgraded.

Project

As a result of the soil conditions it was necessary to over excavate and bring in a compacted structural fill to support the oversized continuous spread footings and isolated column footings. A limited building footprint resulted in the gymnasium being located above the pool structure. Therefore, column locations resulted in a composite floor construction and the implementation of deep longspan open web steel joists for the roof structure. The classroom portion was framed with steel beams and shortspan open web steel joists.



The Design Team

Architect:

Tessier Associates, Inc.

Structural Engineers:

Engineering Design Associates, Inc.

Mechanical and Electrical Engineers:

Landscape Architect:

John C. Walker Landscape

Engineering Design Associates, Inc.

Structural & Civil Engineering

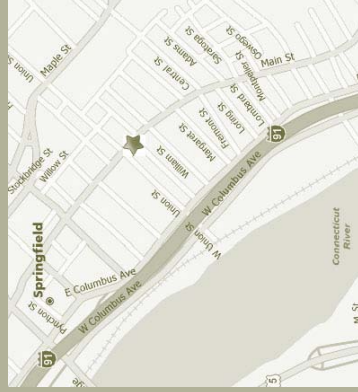
969 Main Street
Springfield, MA 01103

Phone: 413.788.0182

Fax: 413.788.0967

E-mail: edamail@conversent.net

PLEASE
PLACE
STAMP
HERE



Conveniently located in Springfield's Southend, Engineering Design Associates, Inc. is easily accessible from Hartford, Boston, and all of Western Massachusetts

Engineering Design Associates, Inc.

EDA, Inc., was established in 1984 to provide structural and civil engineering services throughout the New England Area. EDA, Inc. has the experience both in structural and civil engineering that is required when developing, coordinating, and supervising complex building structures and sites.

